



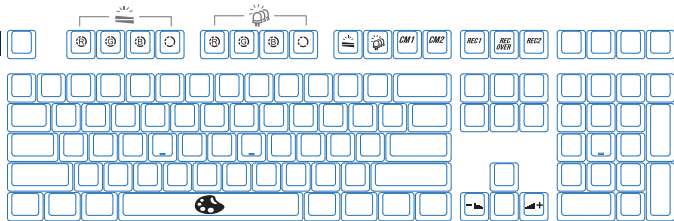
SHINE 6

Ducky Shine 6

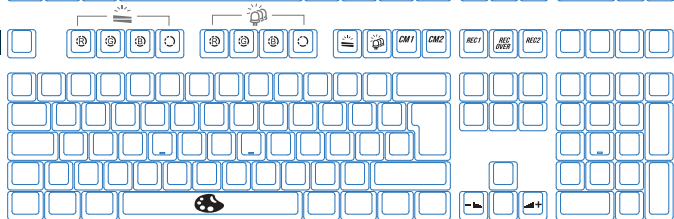
- 型號：DKSH1608ST
- 結構：機械式結構
- 軸：Cherry MX RGB機械軸
- LED：三色LED燈
- 鍵帽材質：PBT或ABS
- 印字技術：二色成形 或 雷射雕刻
- 尺寸：450 x 155 x 45 mm
- 重量：1.1 kg
- 產地：台灣

確切規格每個地區可能會有所不同
詳細請詢問各地代理商

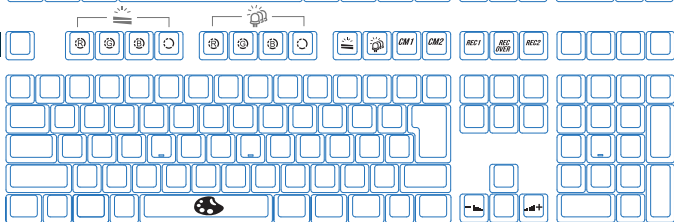
美規



歐規



日規



側邊燈光操作模式

Fn + F9

重點提示：

Ducky Shine 6 使用三色RGB LED燈，透過Ducky混燈技術可以讓使用者依據紅色(R)、綠色(G)、藍色(B)不同顏色的亮度搭配，組合出超越3色表現。

第一次：連動模式

參考按鍵燈光模式

第二次：100%全亮模式

玩家指定色

第三次：跑馬燈模式

玩家指定色

第四次：跑馬燈模式

RGB隨機

第五次：循環模式

RGB隨機

第六次：關閉所有燈光效果

- 「玩家指定色」模式，皆可透過下列操作來進行細節調整。
 - ◆ Fn + F1：調整Color R (紅色) 亮度，10階。
 - ◆ Fn + F2：調整Color G (綠色) 亮度，10階。
 - ◆ Fn + F3：調整Color B (藍色) 亮度，10階。
 - ◆ Fn + F4：清除Color RGB 所有的顏色設定值。
 - ◆ 壓住顏色不放會變成循環顯示。
 - ◆ 調色盤功能：Fn + Alt + 空白鍵，108鍵顯示不同顏色，排列方式以色盤呈現，只要點選就能切換顏色。
- 除了連動鍵盤整把效果、100%全亮隨機顏色模式外，皆可透過下列操作來進行細節調整。
 - ◆ Fn + Alt + ←：降低速度。
 - ◆ Fn + Alt + →：增加速度。
 - ◆ 壓住 Fn + F9，3秒鐘關閉所有背光功能。

Fn + F10

按鍵燈光操作模式

重點提示：

Ducky Shine 6 使用三色RGB LED燈，透過Ducky混燈技術可以讓使用者依據紅色(R)、綠色(G)、藍色(B)不同顏色的亮度搭配，組合出超越3色表現。

第一次：100%全亮模式	玩家指定色
第二次：呼吸燈模式	玩家指定色
第三次：循環模式	RGB隨機
第四次：波浪模式	RGB隨機
第五次：雨滴模式	RGB隨機
第六次：單點亮模式	RGB隨機
第七次：漣漪模式	RGB隨機
第八次：關閉所有燈光效果	

- 「玩家指定色」模式，皆可透過下列操作來進行細節調整。
 - ◆ Fn + F5：調整Color R (紅色) 亮度，10階。
 - ◆ Fn + F6：調整Color G (綠色) 亮度，10階。
 - ◆ Fn + F7：調整Color B (藍色) 亮度，10階。
 - ◆ Fn + F8：清除Color RGB 所有的顏色設定值。
 - ◆ 壓住顏色不放會變成循環顯示。
 - ◆ 調色盤功能：Fn + 空白鍵，108鍵顯示不同顏色，排列方式以色盤呈現，只要點選就能切換顏色。
- 除了100%全亮隨機顏色模式外，皆可透過下列操作來進行細節調整。
 - ◆ Fn + ←：降低速度。
 - ◆ Fn + →：增加速度。
 - ◆ 壓住 Fn + F10，3秒鐘關閉所有背光功能。

記憶區域背光

重點提示：

Ducky Shine 6採用Ducky背光專利功能「記憶區域背光」，提供2組給使用者儲存鍵盤上想要背光的區域設定，並且每個按鍵還能提供不同顏色儲存。此外，也能讓記憶區域背光的按鍵，顯示循環變色效果。結合整把鍵盤背光功能，可以讓鍵盤在特定模式下，能顯示記憶區域背光效果，增添鍵盤操作樂趣，更貼近使用者想要顯示的背光鍵盤理想。

Fn + F11

CM1依序有不同動作：

第1段：依玩家設定的區域與顏色顯示。

第2段：依玩家設定的區域循環變色顯示。

第3段：OFF 關閉 CM1

Fn + F12

CM2依序有不同動作：

第1段：依玩家設定的區域與顏色顯示。

第2段：依玩家設定的區域循環變色顯示。

第3段：OFF 關閉 CM2

Fn + PrtSc

REC1 · 錄製CM1設定

Fn + Pause

REC2 · 錄製CM2設定

Caps Lock + F5 / F6 / F7

設定 紅色 / 綠色 / 藍色 燈光顏色

Caps Lock + F8

清除所有燈光

Caps Lock + Scroll Lock

REC Over · 完成錄製

記憶區域背光

重點提示：

Ducky Shine 6採用Ducky背光專利功能「記憶區域背光」，提供2組給使用者儲存鍵盤上想要背光的區域設定，並且每個按鍵還能提供不同顏色儲存。此外，也能讓記憶區域背光的按鍵，顯示循環變色效果。結合整把鍵盤背光功能，可以讓鍵盤在特定模式下，能顯示記憶區域背光效果，增添鍵盤操作樂趣，更貼近使用者想要顯示的背光鍵盤理想。

- 操作重點提示：先調整喜歡的燈色，再選擇要指定的按鍵。

操作過程：

1. 按住 Fn + PrtSc為設定CM1的設定，若按下Fn + Pause則是設定CM2的設定。
2. 當進入錄製模式後，Caps Lock旁會顯示當前要設定的顯示顏色，可以透過Caps Lock + F5/F6/F7/F8調整顯示燈色。當有喜歡的顏色出現時，直接在鍵盤上按下任意鍵，該鍵就會儲存成喜歡的顏色。
3. 使用者可以重覆上一個步驟，讓Ducky Shine 6在同一組區域背光設定中，不同按鍵能擁有多種不同燈色。
4. 當完成錄製後，按下REC Over(Caps Lock + Scroll Lock)功能，結束錄製。

註：◆ 當進入錄製模式時，會先顯示上一回儲存的內容狀態。

◆ 錄製30秒無動作，不儲存後自動關閉。

◆ CM1、CM2可以與其他燈光模式並存，CM1優先權較高(CM1>CM2)，分別控制個別區塊。

行動電源DEMO模式

適合插在行動電源或USB充電座提供燈光效果展示之用，不送出鍵盤訊號。

壓住按鍵左Ctrl + 左Shift + Caps Lock，再輸入電源。

此模式下無法記憶，每次使用皆須重新插拔。

店家櫥窗DEMO模式

用以展示多色DEMO。

Fn + Alt + Ctrl 達3秒

開啟/關閉展示單點亮、循環變色、波浪模式、蛇形跑馬燈、極光模式與漣漪模式。

鍵盤供應電力調整

USB 3.0 供電模式(預設模式)	按住 右Alt + 空白鍵，再將USB插入電腦
USB 2.0 供電模式	按住 左Alt + 空白鍵，再將USB插入電腦

回復出廠設定

美規、歐規	左Windows鍵 + 右Windows鍵
日規	Fn + 左Windows鍵

- 壓住3秒後，全鍵盤會閃3下表示完成回復

DIP開關功能

- 若將鍵盤接上特殊器材(如K VM)等裝置，建議切換成6-Key Rollover達到最高支援性。
- 當進行N-Key Rollover與6-Key Rollover模式切換時，請重新插拔並且須讓鍵盤完全斷電15秒才能順利切換。
- 只有在N-Key Rollover模式下才能更新韌體。

DIP1~DIP3決定Fn鍵位置
(預設為OFF、OFF、OFF)：

DIP1	DIP2	DIP3	
ON	ON	ON	Ctrl Win Alt [] Alt Win [] Ctrl
OFF	ON	ON	Fn Win Alt [] Alt Win [] Ctrl
ON	OFF	ON	Ctrl Fn Alt [] Alt Win [] Ctrl
OFF	OFF	ON	Ctrl Win Fn [] Alt Win [] Ctrl
ON	ON	OFF	Ctrl Win Alt [] Fn Win [] Ctrl
OFF	ON	OFF	Ctrl Win Alt [] Alt Fn [] Ctrl
OFF	OFF	OFF	Ctrl Win Alt [] Alt Win Fn Ctrl
ON	OFF	OFF	Ctrl Win Alt [] Alt Win [] Fn

	OFF (預設值)	ON
DIP 4	N-Key Rollover任意全鍵輸出	6-Key Rollover任意6鍵輸出

Ducky Macro V2.0

特色說明：

- 1組原始鍵盤功能・5組玩家客製設定值(Profile)
- 可以設定(Macro)巨集之按鍵 (2 layer)
 - ◆ 原始鍵盤上任一個按鍵 (Default layer)
 - ◆ Fn層按鍵 (Fn layer)
- 按鍵可以設定之功能
 - ◆ 多媒體功能鍵
 - ◆ 更換字元
 - ◆ 連續按鍵輸出
 - 時間記錄：
 - ▲ 呈現使用者按下的原始情況
 - ▲ 手動加入時間間隔
 - 巨集執行狀況：
 - ▲ 按一下執行一次
 - ▲ 按下持續執行到使用按下第2次
 - ▲ 壓下按鍵時持續執行

無法設定Macro功能的按鍵：

- Fn
- Fn + ESC
- Fn + F1~F12
- Fn + Print Screen
- Fn + Scroll Lock
- Fn + Pause
- Fn + 0~9
- Fn + Ctrl
- Fn + Alt
- Fn + windows
- Fn + ↑ ↓ ← →
- Fn + Space

Ducky Macro

基本快捷鍵功能

切換設定檔 (Profile)

Fn +	1	=	切換至第1組設定	原始鍵盤功能(預設值)
	2		切換至第2組設定	可自訂義按鍵Macro功能
	3		切換至第3組設定	
	4		切換至第4組設定	
	5		切換至第5組設定	
	6		切換至第6組設定	

- 燈光效果：當切換完後，Caps Lock按鍵會閃爍該設定值數字的次數。
- 只有Profile 2~6才可以進行Macro設定。

清除單一個設定黨的Macro設定

美規、歐規	任一個Windows鍵+空白鍵3秒
日規	左Windows鍵+空白鍵3秒

Ducky Macro 基本快捷鍵功能

巨集執行狀況選項

Fn +	Q	=	按1下後執行1次巨集
	W		按1次後持續執行巨集，直到按下第2次按鍵才停止
	E		按住按鍵時持續執行巨集，直到放開按鍵才停止

巨集時間記錄選項

Fn +	1	=	0.02s
	2		0.1s
	3		0.2s
	4		0.4s
	5		0.8s
	6		1s

- 註：巨集預設輸入會以使用者打字的時間進行記錄儲存，但在設定時有加入過1次間隔時間，整串巨集將更改成客製時間間隔處理，沒有加入時間間隔將以預設0.02秒輸出。
- Macro開啟/跳出錄製快捷鍵：按住Fn + Ctrl 3秒

多媒體鍵功能設定

除了更換字元與巨集輸出外，Ducky針對每個按鍵再提供更多選項，包含了多媒體鍵與滑鼠功能等24種多媒體功能設定。設定時只要輸入下方表格組合鍵，即可設定完成。

Fn + Windows鍵 + 下方按鍵			
A	音量靜音	M	搜尋
B	音量變大	N	上一頁
C	音量變小	O	下一頁
D	播放 / 暫停	P	滑鼠左鍵
E	停止	Q	滑鼠右鍵
F	下一首	R	滑鼠中鍵
G	上一首	S	滑鼠遊標向上
H	計算機	T	滑鼠遊標向下
I	我的電腦	U	滑鼠遊標向左
J	瀏覽器首頁	V	滑鼠遊標向右
K	郵件	W	滑鼠滾輪向上捲動
L	多媒體程式	X	滑鼠滾輪向下捲動



- 註：由於英文字母在不同語言配置略有差異，此設定以美規配置為主，詳細請參考圖示。

- 註：此為Ducky Macro V2.0新增功能

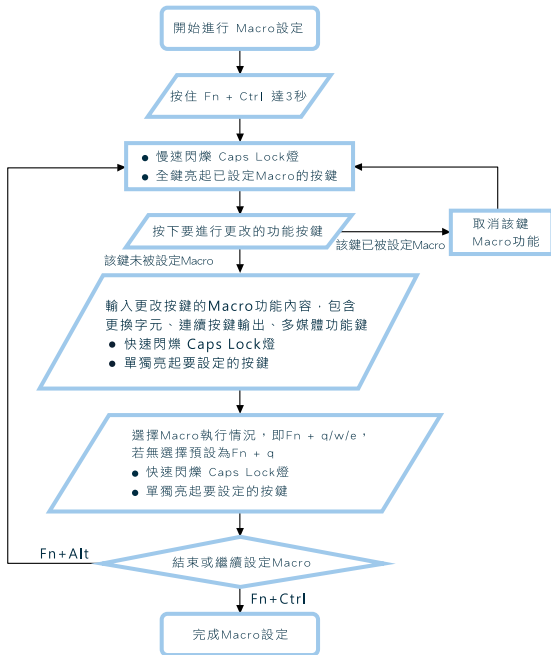
Windows 常見功能快捷鍵

除了提供多媒體功能設定外，PC操作快捷功能鍵可以透過Windows組合鍵的方式來完成，在此僅提供一些常用的快捷功能鍵提供參考，若想要詳細內容可以參考Microsoft網站的資訊。

Windows常見功能快捷鍵			
Ctrl + C	複製選取的項目	Windows鍵 + D	顯示桌面
Ctrl + X	剪下選取的項目	Windows鍵 + M	將所有視窗最小化
Ctrl + V	貼上選取的項目	Windows鍵 + L	鎖定電腦或切換使用者
Ctrl + Z	復原動作	Windows鍵 + R	開啟 [執行] 對話方塊
Ctrl + Y	重做動作	Windows鍵 + F	搜尋檔案或資料夾
Ctrl + N	建立新文件	Windows鍵 + ↑	最大化視窗
Ctrl + O	開啟現有的文件	Windows鍵 + ↓	最小化視窗
Ctrl + S	儲存文件的變更	Windows鍵 + ←	將視窗最大化到螢幕左側
Ctrl + P	列印文件	Windows鍵 + →	將視窗最大化到螢幕右側
Alt + F4	關閉使用的程式	Windows鍵 + Home	最小化使用中視窗之外的所有視窗

- <http://windows.microsoft.com/en-us/windows/keyboard-shortcuts>

Ducky Macro (巨集)設定邏輯圖



Ducky Macro 使用範例

[範例A]：想要將Z設定成Q輸出

操作方式：按住Fn + Ctrl 3秒鐘 → 按下Z → 按下Q → Fn + Ctrl

[範例B]：想要按下Fn + A後連續輸出文字「Ducky」直到使用者放開按鍵才停止動作

操作方式：按住Fn + Ctrl 3秒鐘 → 按下Fn + A → 輸入文字Ducky → Fn + E → Fn + Ctrl

[範例C]：想要將Q設定輸出文字「key」，但希望每個字母輸出的時間間隔約0.2秒

操作方式：按住Fn + Ctrl 3秒鐘 → 按下Q → 輸入k → Fn + 3 → 輸入e → Fn + 3 → 輸入y → Fn + Ctrl

[範例D]：想要將M設定成音量靜音功能

操作方式：按住Fn + Ctrl 3秒鐘 → 按下M → 按住Fn + Windows鍵 + A → Fn + Ctrl

[範例E]：在Windows系統下，想要按下F1就能顯示桌面

操作方式：按住Fn + Ctrl 3秒鐘 → 按下F1 → 按住Windows鍵 + D → Fn + Ctrl

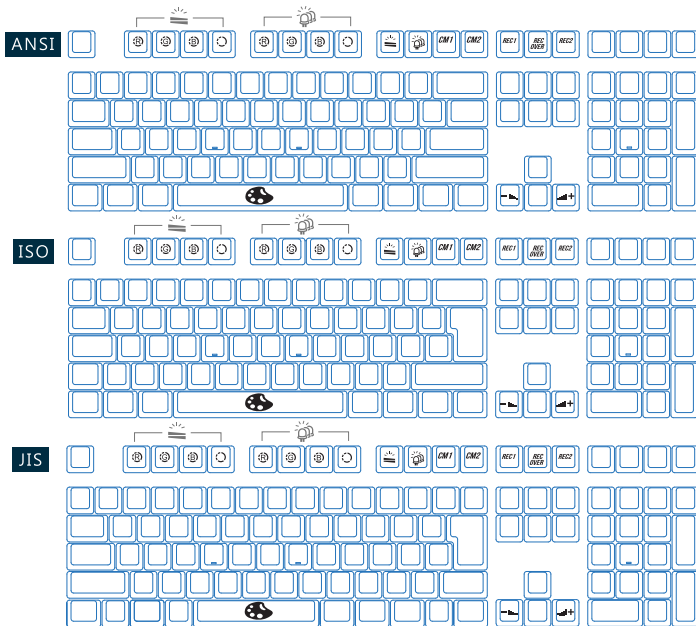
注意事項：請先將設定檔設定成Profile 2~6，才可以進行Macro設定。

NOTE

Ducky Shine 6

- Model Name : DKSH1608ST
- Type : Mechanical Keyboard
- Switch : Cherry MX mechanical Switches
- LED : RGB color LED
- Keycap Material : PBT or ABS
- Legend printing : Double shot or Laser engraved
- Dimensions :
450 x 155 x 45 mm
- Weight : 1.1kg
- Production : Taiwan

For keyboard's specs and details,
please contact our local distributors.



Fn + F9

Side LED lighting Modes

Note:

Ducky Shine 6 using a three-color RGB LED light, through Ducky Backlit technology that allows users to mix basis Red (R), Green (G), Blue (B) with a brightness of different colors, a combination of three colors that beyond performance.

First mode: Smart mode	Follow Keyboard LED lighting Mode
Second mode: 100% Full Backlight mode	Players designated colors
Third mode: Marquee Mode	Players designated colors
Fourth mode: Marquee Mode	RGB Random
Fifth Mode: Color Cycling Mode	RGB Random
Sixth Mode: Backlighting Off	

- Players designated colors modes above can be adjusted using the following:
 - ◆ Fn + F1 : Adjust Color (R) brightness. 10 levels.
 - ◆ Fn + F2 : Adjust Color (G) brightness. 10 levels.
 - ◆ Fn + F3 : Adjust Color (B) brightness. 10 levels.
 - ◆ Fn + F4 : Erase Red, Green and Blue color setting.
 - ◆ Fn + Alt + Spacebar (Color Palette): Activate Color Palette to display 108 different colors, press to select the color you pick to complete setting.

Side LED lighting Modes

Fn + F9

Note:

Ducky Shine 6 using a three-color RGB LED light, through Ducky Backlit technology that allows users to mix basis Red (R), Green (G), Blue (B) with a brightness of different colors, a combination of three colors that beyond performance.

- In addition to the smart mode, 100% LED indicators light on mode, and other modes can be adjusted by user with the following key sequences.
 - ◆ Fn + Alt + ← : Decrease speed.
 - ◆ Fn + Alt + → : Increase speed
 - ◆ Hold Fn + F9 for 3 seconds to turn off all backlighting (including the Keyboard lighting LED Mode, CM1 and CM2)
 - ◆ Smart mode: The keyboards backlight LEDs is in relation with the LEDs on the side, as you change the backlightings LEDs the side LEDs will change as well.

Keyboard LED lighting Mode

Fn + F10

Note:

Ducky Shine 6 using a three-color RGB LED light, through Ducky Backlit technology that allows users to mix basis Red (R), Green (G), Blue (B) with a brightness of different colors, a combination of the three colors that beyond performance.

First Mode: 100% Full Backlight mode	Players designated colors
Second Mode: Breathing Mode	Players designated colors
Third Mode: Color Cycling Mode	RGB Random
Fourth Mode: Wave Mode	RGB Random
Fifth Mode: Rain Drop Mode	RGB Random
Sixth Mode: Reactive Mode Advanced	RGB Random
Seventh Mode: Ripple Mode	RGB Random
Eighth Mode: Backlighting Off	

Fn + F10

Keyboard LED lighting Mode

Note:

Ducky Shine 6 using a three-color RGB LED light, through Ducky Backlit technology that allows users to mix basis Red (R), Green (G), Blue (B) with a brightness of different colors, a combination of the three colors that beyond performance.

- Player designated colors modes above can be adjusted using the following:
 - ◆ Fn + F5 : Adjust Color (R) brightness. 10 levels.
 - ◆ Fn + F6 : Adjust Color (G) brightness. 10 levels.
 - ◆ Fn + F7 : Adjust Color (B) brightness. 10 levels.
 - ◆ Fn + F8 : Erase Red, Green and Blue color setting.
 - ◆ Fn + Spacebar (Color Palette): Activate Color Palette to display 108 different colors, press to select the color you pick to complete setting.
- Besides the 100% LED indicators light on mode, other modes can also adjusted by users with the following key sequences.
 - ◆ Fn + ← : Decrease speed.
 - ◆ Fn + → : Increase speed
 - ◆ Hold Fn + F10 for 3 seconds to turn off all backlighting (including Side lighting LED Modes, CM1 and CM2)

LED Zone Customization Mode

Note:

Ducky Shine 6 uses Ducky's patented backlighting memory technology. This mode provides 2 sets of memory, allowing you to customize individual key's backlighting. In addition, the customized zones be set to Breathing Mode. The keyboard can be set to exactly how users want their backlight to behave.

Fn + F11	CM1 Cycle: First step: Turn on user customized zone and color. Second step: Breathing of user customized zone. Third Step: Turn off CM1
Fn + F12	CM2 Cycle: First step: Turn on user customized zone and color. Second step: Breathing of user customized zone. Third Step: Turn off CM2
Fn + PrtSc	REC1 record CM 1 setting
Fn + Pause	REC1 record CM 1 setting
Caps Lock + F5 / F6 / F7	Set up Red/ Green/ Blue LED Color
Caps Lock + F8	Erase all LED light
Caps Lock + Scroll Lock	REC Over

LED Zone Customization Mode

Note:

Ducky Shine 6 uses Ducky's patented backlighting memory technology. This mode provides 2 sets of memory, allowing you to customize individual key's backlighting. In addition, the customized zones be set to Breathing Mode. The keyboard can be set to exactly how users want their backlight to behave.

- Important:

- ◆ Adjust to the brightness first, then set the individual key to be set to that color.

- Recording steps

1. Press Fn + PrtSc to record CM1, and Press Fn + Pause to record CM2.
2. When start recording mode, Caps Lock will display the current LED brightness. The brightness can be adjusted by hitting Caps Lock + F5/ F6/ F7/ F8. After setting the desired brightness, hitting any key on the keyboard will set that key to the selected brightness.
3. Repeating the above steps allow the user to set Ducky Shine 6 with different colors to different keys. If the key have been set, press again to cancel the setting.
4. To finish recording, press REC Over (Caps Lock + Scroll Lock) function to finish recording, the Brightness of the Caps Lock key is the value you set.

Note:

- ◆ Entering the recording mode will display the previously saved setting.
- ◆ If no changes are made within 30 seconds in the recording mode, the recording session will terminated without saving.
- ◆ CM1 and CM2 can be turned on along with other lighting modes. CM1 has the priority over CM2 when the zone overlaps.

DEMO Mode

This mode will not send any keycodes and will not function as a keyboard.

Please unplug and plug the keyboard to restart the keyboard in normal keyboard mode.

Hold Left Ctrl + Left Shift + Caps Lock then plug the keyboard into power source.

DEMO mode for the store window to showcase

Fn + Alt + Ctrl for 3 sec

ON/OFF display Single LED, Cycling, Wave, Snake Marquee, Aurora and Ripple Mode.

Keyboard power mode

USB 3.0 Power Mode(Default)	Hold Right Alt + spacebar and plug-in USB port
USB 2.0 Power Mode	Hold Left Alt + spacebar and plug-in USB port

Reset to Factory Defaults

US ANSI & EU ISO Layout	Left + Windows key+ Right Windows key
JP JIS Layout	Fn + Left Windows key

- Hold for 3 seconds, the keyboard's backlighting will flash 3 times to indicate the keyboard that have been reset.

DIP Switch Functions

- For compatibility with KVM or operating systems that does not support N-Key Rollover (NKRO), it is recommended to switch to 6-Key Rollover (6KRO) mode.
- Keep the keyboard unplugged for 15 seconds after switching between NKRO and 6KRO mode before plugging the keyboard into the USB port.
- Ducky Shine 6 cannot be upgraded under 6KRO. Please keep the keyboard in NORO mode(default) to upgrade the firmware.

DIP1~DIP3 to decide where FN locate
(Default is OFF \ OFF \ OFF) :

DIP 1	DIP 2	DIP 3	
ON	ON	ON	Ctrl Win Alt [] Alt Win [] Ctrl
OFF	ON	ON	Fn Win Alt [] Alt Win [] Ctrl
ON	OFF	ON	Ctrl Fn Alt [] Alt Win [] Ctrl
OFF	OFF	ON	Ctrl Win Fn [] Alt Win [] Ctrl
ON	ON	OFF	Ctrl Win Alt [] Fn Win [] Ctrl
OFF	ON	OFF	Ctrl Win Alt [] Alt Fn [] Ctrl
OFF	OFF	OFF	Ctrl Win Alt [] Alt Win Fn Ctrl
ON	OFF	OFF	Ctrl Win Alt [] Alt Win [] Fn

	OFF (Default)	ON
DIP 4	N-Key Rollover mode	6-Key Rollover mode

Ducky Macro V2.0

Features:

- 1 default keyboard function , 5 custom sets for customize setting (Profile)
- Set of keys (2 layers)
 - ◆ Default layer
 - ◆ Fn layer
- Keys can be set
 - ◆ Multimedia function
 - ◆ Keycode change
 - ◆ Macro output
 - Time record:
 - ▲ Show the original status when user PRESS it
 - ▲ Add time interval manually
 - Implementation:
 - ▲ When the key PRESS, start to run Macro
 - ▲ PRESS to insert Macro repeatedly until PRESS again to stop
 - ▲ Repeat to insert Macro while PRESS the key

Unable to set Macro function:

- Fn
- Fn + ESC
- Fn + F1~F12
- Fn + Print Screen
- Fn + Scroll Lock
- Fn + Pause
- Fn + 0~9
- Fn + Ctrl
- Fn + Alt
- Fn + windows
- Fn + ↑ ↓ ← →
- Fn + Space

Ducky Macro hotkeys function

Switch profiles

Fn +	1	=	Switch to profile 1	Default Key function (Default)
	2		Switch to profile 2	Customize Macro Key Features
	3		Switch to profile 3	
	4		Switch to profile 4	
	5		Switch to profile 5	
	6		Switch to profile 6	

- Lighting effects: After the configuration, the Caps Lock key will start flashing the value number that you configured.
- Only Profile 2~6 can be set for Macro.

Reset Macro setting for single profile

US ANSI & EU ISO Layout	HOLD Any Windows key + Spacebar for 3 seconds
JP JIS Layout	HOLD Left Windows key + Spacebar for 3 seconds

Ducky Macro hotkeys function

Macro implementation option

Fn +	Q	=	When the key PRESS, start to run Macro
	W		PRESS to insert Macro repeatedly until PRESS again to stop
	E		Repeat to insert Macro while PRESS the key

Macro Record Option

Fn +	1	=	0.02s
	2		0.1s
	3		0.2s
	4		0.4s
	5		0.8s
	6		1s

- Note: Default Macro function will be based on the user's typing speed and will record it, while setting the time interval, the Macro function will change to the customized time interval set by the user if it does not have any customized time input by the user, it will use 0.02 second as the time interval by default.
- Macro Open/ Shortcut keys recording: Hold Fn + Ctrl for 3 sec

Multimedia function keys

In addition to replace the character with the Macro output outside, Ducky offer more options for each button, including multimedia and mouse function keys that up to 24 different kinds of multimedia features.

Enter the button below to set key combination to activate the function.

Fn + Windows key + Keys below			
A	Mute	M	Search
B	Volume up	N	Previous page
C	Volume down	O	Next page
D	Play/ Pause	P	Mouse Left Click
E	Stop	Q	Mouse Right Click
F	Next playlist	R	Mouse Middle Click
G	Previous playlist	S	Mouse Cursor Up
H	Calculator	T	Mouse Cursor Down
I	My computer	U	Mouse Cursor Left
J	Browser	V	Mouse Cursor Right
K	Mail	W	Mouse Scroll Up
L	Multimedia	X	Mouse Scroll Down



- Note: There shall be some slightly difference in each layout, and this set is base on US ANSI layout for configuration.

- Note: This is Ducky Macro V2.0 new features.

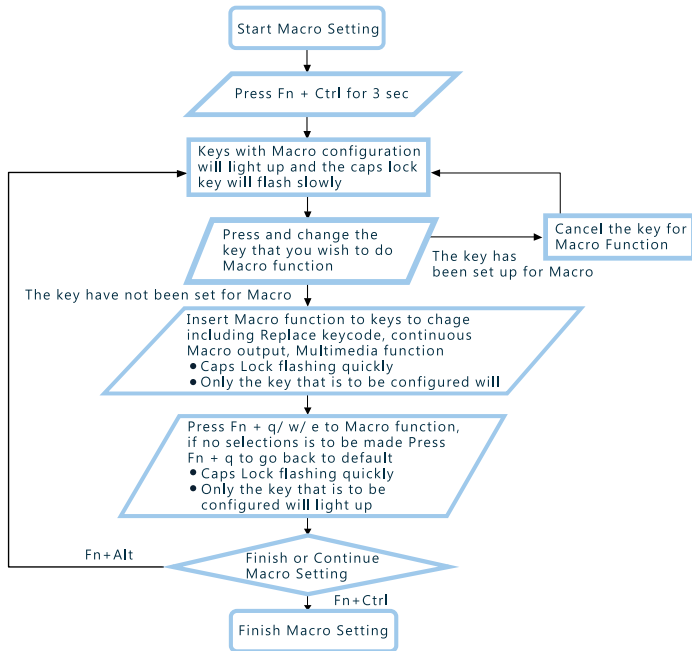
Windows common function keys

Hotkeys can be used in conjunction with combination of windows keys to complete a task. This is reference to the most used hotkeys only, please refer to Microsoft website for more detail.

Windows common function keys			
Ctrl + C	Copy select item	Windows + D	Desktop
Ctrl + X	Cut select item	Windows + M	Minimized all windows
Ctrl + V	Paste select item	Windows + L	Lock computer or change user
Ctrl + Z	Undo	Windows + R	Open [RUN] window
Ctrl + Y	Redo	Windows + F	Search files or folders
Ctrl + N	Open new file	Windows + ↑	Maximized all windows
Ctrl + O	Open current file	Windows + ↓	Minimized windows
Ctrl + S	Save file change	Windows + ←	Maximized window to the left side
Ctrl + P	Print file	Windows + →	Maximized window to the right side
Alt + F4	Quit the software	Windows + Home	Minimized all windows other than the one used

- <http://windows.microsoft.com/en-us/windows/keyboard-shortcuts>

Ducky Macro Implication Diagram



Ducky Macro working example

[Example A]: Configure the key "Z" to "Q" output
Steps: Hold Fn + Ctrl for 3 sec → Press Z → Press Q → Press Fn + Ctrl

[Example B]: Press Fn + A to insert "Ducky" repeatedly until released the key to stop
Steps: Hold Fn + Ctrl for 3 sec → Press Fn + A → Insert Ducky → Press Fn + E → Press Fn + Ctrl

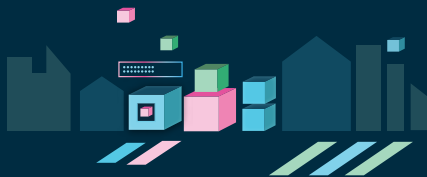
[Example C]: Configure the key "Q" to output word "key" while giving a time interval of 0.2 sec
Steps: Hold Fn + Ctrl for 3 sec → Press Q → Insert k → Press Fn + 3 → Insert e → Press Fn + 3 → Insert y → Press Fn + Ctrl

[Example D]: Press F5 to mute the volume, under Windows system
Steps: Hold Fn + Ctrl for 3 sec → Press F5 → Press Fn + Windows key + A → Press Fn + Ctrl

[Example E]: Press F1 to show Desktop, under Windows system
Steps: Hold Fn + Ctrl for 3 sec → Press F1 → Hold Windows key + D → Press Fn + Ctrl

Note: Set the Profile from Profile 2~6 before setting Macro.

NOTE



www.duckychannel.com.tw